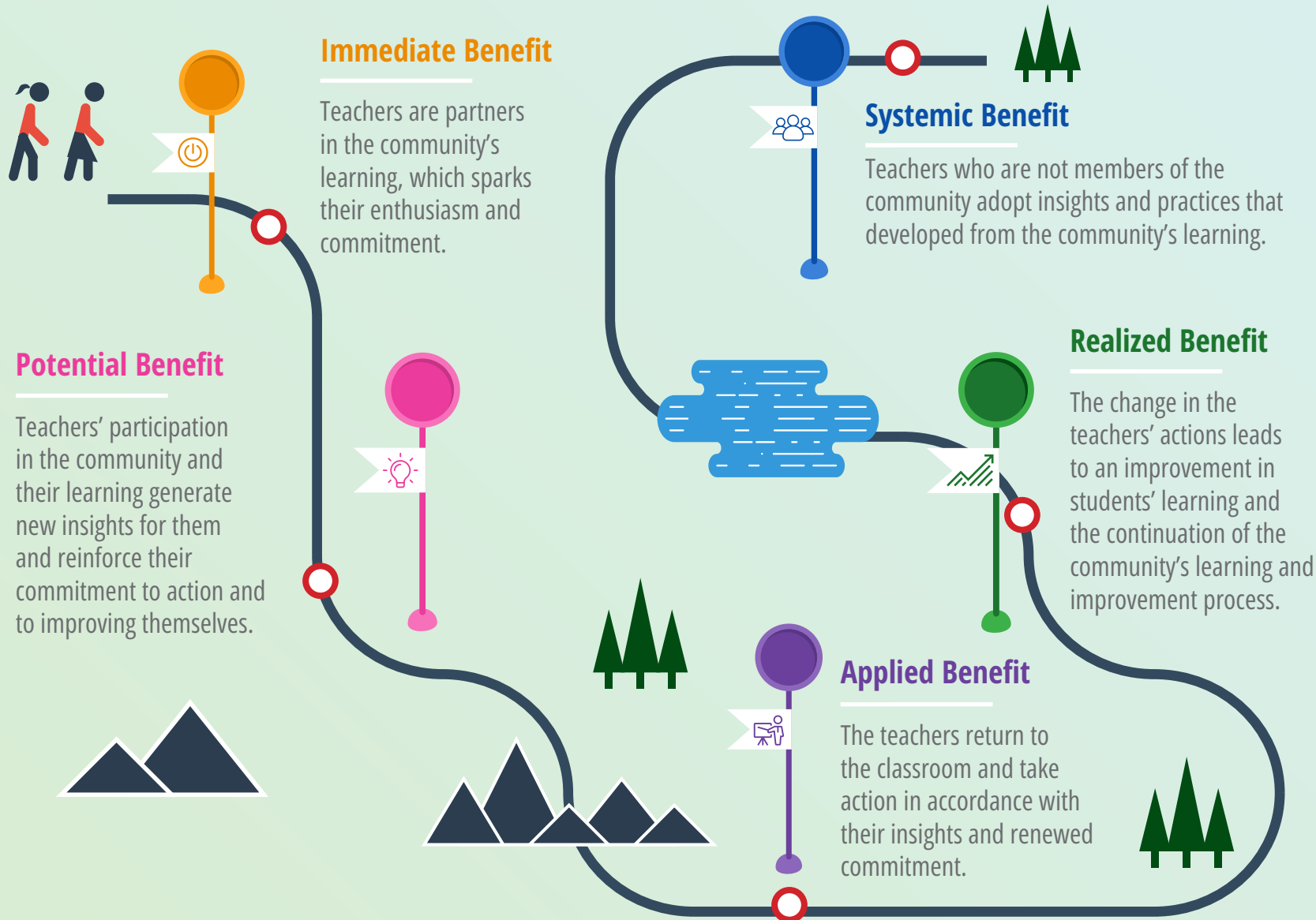
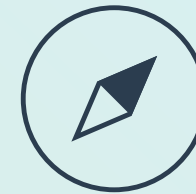


Hashkafa Teacher Learning Communities' Path of Impact

Hashkafa teacher learning communities are intended to improve the teaching and learning processes in the classroom. The learning in the communities is aimed at generating different types of benefits that are of value to the community members, their students, and the school. Understanding the communities' path of impact and where a given community is situated along this path, at any given time, is the key to furthering that impact.



What Characterizes the Communities' Path of Impact?

- 1. The path has a set general trajectory:** It is vital to progress along that trajectory, even if, at times, delays or setbacks arise.
- 2. While there are no shortcuts, it is important not to "get stuck" in the early benefit stages:** The benefits are constructed layer by layer. Attaining the advanced benefits requires preliminary grounding of the more basic benefits, which, at the same, continue to evolve with the progression in benefits.
- 3. The path is continuous:** A realized benefit does not constitute the end of the path but, rather, is an opportunity to delve deeper and improve the benefits that have been attained and to plan the next path.
- 4. The systemic benefit differs from the other types of benefit:** It is based on attaining the preceding benefits, requires exiting the boundaries of the community and developing new mechanisms of impact; we can expect to reach this stage of benefits within two to three years.

Where Is My Community Situated on the Path? Write specific examples that are evidence of...



Systemic Benefit

- The impact of the community's work on the discourse and teaching of teachers and partners who are not members of the community.
- Adoption of the community's learning practices in other contexts in the school.



Realized Benefit

- The long-term impact of the implemented changes on students' learning.
- Continuation of the learning in the community: analysis of the implementation in the classroom and the impact on students, as the basis for forming insights and ongoing improvement.



Applied Benefit

The extent of implementation of the changes and how they are implemented in classroom teaching and in the interaction with students.



Potential Benefit

Insights that emerged or were learned in the community and what they were based on.



Immediate Benefit

The community members' sense of belonging and commitment and the way in which they share needs and challenges.

The community's location on the path of impact is influenced by its longevity, its patterns of action and points of focus, and its members' abilities and needs.

Understanding where the community is situated on the path is important for reflecting on how to deepen and enhance its impact.